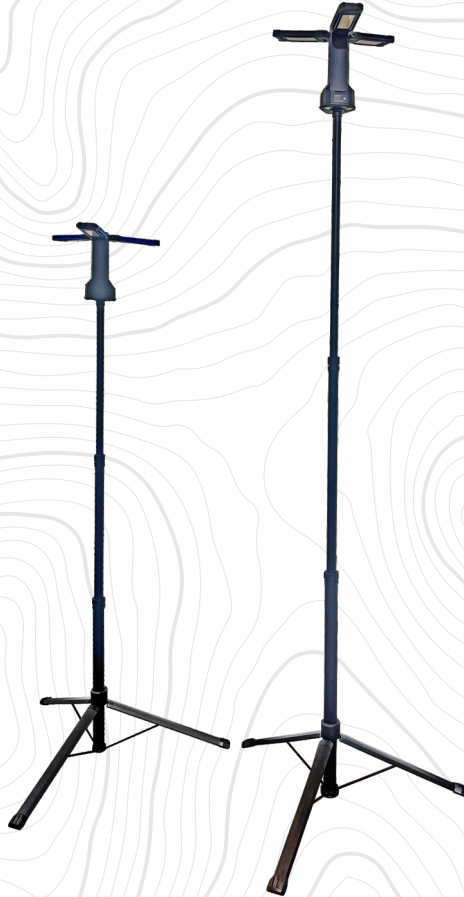


KICKASS



KICKASS ULTRA BRIGHT 4500LM 1.7M TRIPOD CAMPSITE LIGHT
KICKASS ULTRA BRIGHT 6000LM 2.2M TRIPOD CAMPSITE LIGHT

OWNER'S MANUAL

KACAMPLTRI | KACAMPLTRI-2.2M

VER 1.5

SAFETY NOTES

- This light is not a toy. Keep it out of reach of children and do not allow unsupervised use.
- Do not use the light near flammable materials, gases, or open flames.
- Avoid operating the light in areas with excessive humidity or extremely high temperatures.
- Use only the accessories provided with the light.
- Do not direct the light beam into the eyes of people or animals, particularly in high-brightness modes, as this may cause injury.
- Regularly inspect the power cable for any signs of damage. Do not use the device with damaged or non-original cables or plugs. Replace the power supply if necessary.
- Always switch off the device when it is not in use.
- Fully charge the light before first use to ensure optimal battery performance.
- Charge and operate the product in a well-ventilated area. Avoid extreme temperatures to prevent overheating.
- Ensure that the power supply voltage is compatible with the specifications of the device.
- Carefully inspect the product before each use. If any defects or damage are found, do not use the device and contact KickAss support.
- The surface of the light may become hot during operation. Avoid direct contact.
- To reduce the risk of fire or explosion, do not expose the battery to fire, short circuits, strong impacts, or punctures.

TABLE OF CONTENTS

SAFETY NOTES -----	2
PRODUCT SPECIFICATIONS -----	4
INCLUDED COMPONENTS -----	5
PRODUCT FEATURES -----	6
PRODUCT OVERVIEW -----	7
USING THE TRIPOD CAMPSITE LIGHT-----	8
CHARGING THE CAMPSITE LIGHT-----	8
ATTACHING THE CAMPSITE LIGHT TO THE TRIPOD -----	8
USING THE CAMPSITE LIGHT -----	10
USING THE POWER BANK FUNCTION -----	11
USING THE MAGNETIC BASE -----	11
USING THE HANGING HOOK-----	11
TROUBLESHOOTING -----	12
CLEANING INSTRUCTIONS -----	13
WARRANTY & SUPPORT INFORMATION -----	14

PRODUCT SPECIFICATIONS

TRIPOD CAMPING LIGHT 4500 LUMENS 1.7 METERS

PRODUCT DIMENSIONS	Storage Mode: 95 x 95 x 715 mm (LWH) Fully Extended: 770 x 770 x 1810 mm (LWH)
PRODUCT WEIGHT	2.4kg
BATTERY CAPACITY	4000 mAh 8.2V
USB-C INPUT	9V/1A (9W)
USB-A OUTPUT	Up to 4.78V/1A (4.78W)
STANDBY CURRENT	57.8 μ A
RUN TIME	Low Mode (1200): 9 hours Medium Mode (2500 Lumens): 4.5 Hours High Mode (4500): 2 hours
CHARGING TIME	Approximately 4 hours 30 minutes
UNDER-VOLTAGE PROTECTION	5.8V
OVER-CURRENT PROTECTION	2.1A
IP/IK RATING	IPX4 / IK07

TRIPOD CAMPING LIGHT 6000 LUMENS 2.2 METERS

PRODUCT DIMENSIONS	Storage Mode: 95 x 95 x 1000 mm (LWH) Fully Extended: 860 x 860 x 2310mm (LWH)
PRODUCT WEIGHT	2.8kg
BATTERY CAPACITY	8000 mAh
USB-C INPUT	9W
USB-A OUTPUT	Up to 4.78W
STANDBY CURRENT	57.8 μ A
RUN TIME	Daylight: 2.8 hours (high) up to 7 hours (low) Warm light: 3 hours (high) up to 7.2 hours (low)
CHARGING TIME	10 hours
UNDER-VOLTAGE PROTECTION	5.8V
OVER-CURRENT PROTECTION	1.87A
IP/IK RATING	IPX4 / IK07

INCLUDED COMPONENTS



Carry Bag



Campsite Light



Tripod



USB-C Charging Cable

PRODUCT FEATURES

Adjustable Tripod Stand (Up to 1.7m or 2.2m)

Elevates the light to provide broader, more even illumination across a large area.

Three Multi-Directional Light Heads

Each head can be independently adjusted to illuminate different areas simultaneously.

Super Bright 4500 or 6000 Lumens Output

Provides powerful, high-intensity illumination for camping, work sites, or emergencies.

Warm and Daylight Colour Modes

Warm light reduces eye strain and preserves night vision, while daylight offers sharp visibility.

Magnetic Base

Quickly attach the light to ferrous metal surfaces for hands-free operation.

Nested Hanging Hook

Easily hang the light from tents, ropes, or tree branches with adjustable positioning.

Built-In 4000mAh (4500lm variant) and 8000mAh (6000lm variant) Power Bank

Charge your devices directly from the light, combining illumination and portable power.

Compact and Foldable Design

Easily transport and store the light with the included carry bag.

IPX4 Ingress-Rated & IK07 Impact-Rated

Protected against splashes and light rain, with IK07 impact resistance to withstand knocks, bumps, and rough handling, making it well suited for outdoor use.

Short Circuit and Over-Current Protection

Ensures safe operation and automatically resumes function after a fault is cleared.

Lightweight and Portable at 2.4kg (4500lm variant) and 2.8kg (6000lm variant)

Easy to carry, set up, and move around your campsite or work site.

PRODUCT OVERVIEW

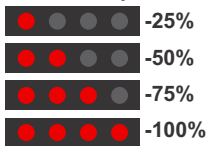


- 1 – Adjustable Light Panels
- 2 – Power/Brightness Change button
- 3 – Tripod Mounting Point
- 4 – Magnetic Base
- 5 – Hanging Hook
- 6 – Battery Level Indicator
- 7 – LED Colour Change Button
- 8 – USB-C Input
- 9 – USB-A Output
- 10 – Mounting Screw
- 11 – Upper Lock Nut
- 12 – Lower Lock Nut
- 13 – Tripod Legs
- 14 – Legs Release Button

USING THE TRIPOD CAMPING LIGHT

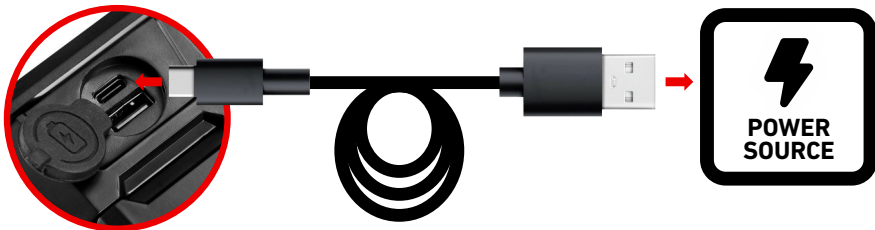
CHARGING THE FLASHLIGHT

- Using the included charging cable, connect the USB-C end to the campsite light's charging port and the other end to a reliable power source such as a power bank, wall adapter, or car charger.
- The battery level indicator lights will turn on according to the charging progress:



- When fully charged, all four battery level indicators will be solid.
- Unplug the charging cable from the campsite light.

Note: If the campsite light is not frequently used, please fully charge the battery every three months to prolong its life.



ATTACHING THE CAMPSITE LIGHT TO THE TRIPOD



Push the release button on the end of the tripod to release and extend the tripod legs down the frame.



Place the tripod on a flat surface, ensuring that all feet are resting securely on the ground.



Line the campsite light mounting point up with the screw on the tripod head.

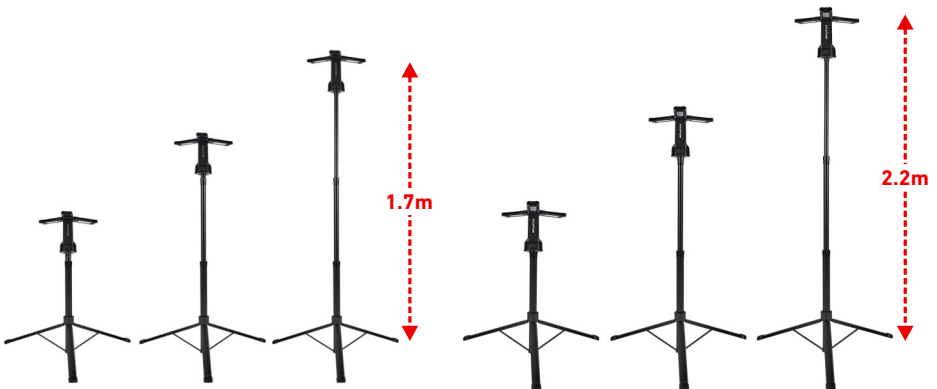


Carefully twist the light clockwise onto the screw until it is firmly attached. Do not overtighten.



Undo the lock nuts on the tripod stand to extend to your preferred height. Re-lock everything securely once complete.

Note: The tripod feet do not have a locking mechanism. Please ensure they are fully extended and firmly positioned on the ground before use.



Up to 1.7m for 4500 lumens variant

Up to 2.2m for 6000 lumens variant

USING THE CAMPSITE LIGHT

Note: Please fully charge the campsite light before first use.



- Pressing the POWER/LIGHT MODE button will cycle through the following:

Power OFF ▶ ON/Low Brightness ▶ Medium Brightness ▶ High Brightness ▶ Power OFF

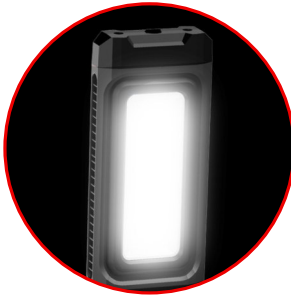
- Press the button again to turn it off.



- To change the light mode you are using, press the LIGHT CHANGE button. This will toggle the light mode between daylight and warm light.



3 ADJUSTABLE LIGHT PANELS



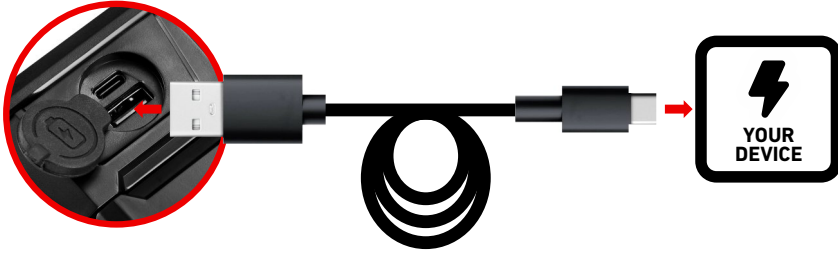
DAYLIGHT



WARM LIGHT

USING THE POWER BANK FUNCTION

- Use a charging cable compatible with your device that has a USB-A connector on one end. Connect the cable to your device.
- Locate the USB-A charging port at the back of the campsite light, covered by a rubber cap.
- Plug the USB-A end of the cable into the port to begin charging.



Note: Using the campsite light while charging will temporarily disable the *CHANGE BRIGHTNESS* feature.

USING THE MAGNETIC BASE



The campsite light features a strong magnetic base for quick, secure attachment to metal surfaces - perfect for hands-free lighting in workshops, vehicles, or tight spaces.

USING THE HANGING HOOK



The campsite light also features a built-in hook for hanging on secure and stable mounting points.

TROUBLESHOOTING

The campsite light won't turn on.	<ul style="list-style-type: none">• Check the charge level of the campsite light by pressing the POWER button, checking the power level indicator. If no LEDs are lit, the unit is flat. Please charge the campsite light.
The campsite light won't charge.	<ul style="list-style-type: none">• Check if the charging indicator lights up when the campsite light is plugged in. If not, there may be an issue with a connection, charging cable, or power source.• Ensure the charging cable is securely connected to both the campsite light and a working power source.• Check the condition of the charging cable for any visible damage such as frayed wires or loose fittings, as this may prevent proper charging. If any damage is found, try using a different cable.
The battery is running out faster than expected.	<ul style="list-style-type: none">• Using the campsite light at high brightness while the device is connected for charging will drain the battery faster.• Ambient temperature and humidity can affect battery efficiency; hot conditions may reduce performance.• Make sure the campsite light is fully charged before use; partial charges may reduce runtime.
The campsite light brightness won't change.	<ul style="list-style-type: none">• You may be trying to adjust the brightness level while it is still connected to a power source. Please unplug the cable and try adjusting again.

CLEANING INSTRUCTIONS

- Do not use sharp or hard objects to clean the campsite light, as they may cause scratches or damage.
- Always turn off the campsite light and disconnect it from any power source before cleaning.
- Avoid cleaning the campsite light while it is charging or in a humid environment to prevent electrical hazards.
- Do not use abrasive cleaners, solvents, or corrosive chemicals, as these can damage the surface or internal components.
- Wipe the campsite light with a soft, damp cloth. Do not immerse in water or use running water to clean. Avoid harsh chemicals or abrasive materials.

WARRANTY & SUPPORT INFORMATION

KICKASS LIMITED WARRANTY

Your KickAss product is backed by our limited warranty against defects in materials and workmanship for the applicable warranty period. Warranty periods vary by product - please check the product page or the KickAss Warranty Index for details.

If a fault covered by warranty occurs, KickAss will, at its discretion:

- Repair the product, or
- Replace the product with the same or equivalent model, or
- Provide another suitable remedy in line with Australian Consumer Law (ACL).

Warranty claims may be declined if the issue is caused by:

- Normal wear and tear.
- Improper use, faulty installation, or lack of maintenance.
- Modifications, tampering, or unauthorised repairs.
- Accidents, damage in transit (customer organised), or environmental causes.
- Consumable items, unless defective in materials or workmanship.
- Damage caused by external events such as severe weather (including storms, lightning, hail, or flooding), fire, impact, explosions, vandalism, or theft.

MAKING A WARRANTY CLAIM

1. Visit our Support Portal: supportportal.kickassproducts.com.au
2. Locate your product via the Products & Troubleshooting section.
3. Submit a claim through the product form and follow the guidance from our Customer Service Team.

All warranty claims must include a completed product form, proof of purchase, and clear evidence of the defect or fault. Incomplete submissions or missing information may cause delays in processing and could result in your claim being declined.

Costs from third-party inspections or repairs are not covered unless approved in writing by KickAss.

YOUR RIGHTS UNDER ACL

This warranty is provided in addition to your rights under the Australian Consumer Law. You may be entitled to a replacement or refund for major failures, and to compensation for other reasonably foreseeable loss or damage.

Need Help?

Product Support: support@kickassproducts.com.au

Warranty Claims: warranty@kickassproducts.com.au

Customer Support Portal: supportportal.kickassproducts.com.au

KICKASS

**KickAss is a registered trademark of
KickAss Products Pty Ltd**

**Designed & imported by
KickAss Products Pty Ltd
39 Iris Place, Acacia Ridge, QLD 4110
Australia**

Made in China

